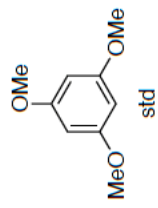
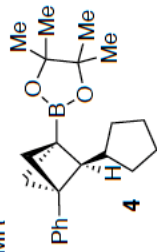


qNMR



$mg_{std} = 30.6 \text{ mg}$;
 $MW_{std} = 168.19 \text{ g/mol}$
 $mg_4 = 54.9 \text{ mg}$;
 $MW_4 = 338.30 \text{ g/mol}$
molar ratio = 0.88
 $P_{std} = 99\%$

Thus: $wt_4\% = (30.6 \cdot 338.30 \cdot 0.88 \cdot 0.99) / (54.9 \cdot 168.19) \cdot 100$
 $= 97.7\%$

